

# Specialised Accessories

## Duct Detector Chamber

### Model 6377

- Patented venturi pipe and duct housing - only one pipe is required
- User friendly installation
- For conventional as well as analogue and addressable systems



### General

The Uniguard-4 duct detector chamber **6377** is used when smoke is to be detected in a ventilation duct. Both the "UG-4 pipe" and the housing, where a smoke detector is placed, are especially designed for optimum airflow through the detector. The housing is made of grey ABS and the UG-4 pipe is made of aluminum. The unit is supplied with mounting screws, four IP65 glands for cable entry, end plug for the pipe and a black pipe gasket for ventilation duct entry.

The 6377 can be used in conventional as well as analogue fire alarm systems, depending on the detector mounted inside the housing.

The Photoelectric smoke detector 4452, plugged in base 2324, is used in a conventional system (zone line input).

The Analogue photoelectric smoke detector 4401, plugged in analogue base 3312, is used in an analogue and addressable system.

### UG-4 pipe 6380 and 6381

The UG-4 venturi pipe is available in three lengths (0.6, 1.5 & 2.8 m). The pipe can easily be shortened to suit the ventilation duct. The attached plug is to be placed in the end of the pipe.

A ventilation duct with a width < 0.6 m (diameter) requires a 0.6 m pipe (6380-06), ended inside the duct.

A ventilation duct with a width > 0.6 m (diameter) requires a 1.5 or 2.8 m pipe (6380-15 / -28), ended outside the duct.

See back-side of this data sheet.

### Air flow indicator

6377 has a built-in air flow indicator. If it does not move, the air flow is too low.

### Accessories

A bracket is required when 6377 is mounted on a round ventilation duct. See back-side of this data sheet.

Filter (10 pieces) **6384**, can be used in extremely dirty / dusty environments such as saw mills, timber yards, etc. The filter shall be placed inside the housing, in a slot just before the detector.



**Australia** Head Office: 4 Pike Street Rydalmere NSW 2116  
**Ph**+61 2 9684 1466 **Fx**+61 2 9684 4146 **Toll Free** 1300 78 FIRE

**New Zealand** Unit 106, The Zone, 23 Edwin Street Mount Eden 1024  
**Ph**+64 9 638 4644 **Fx**+64 9 6384645 **Toll Free** 0800 220 007

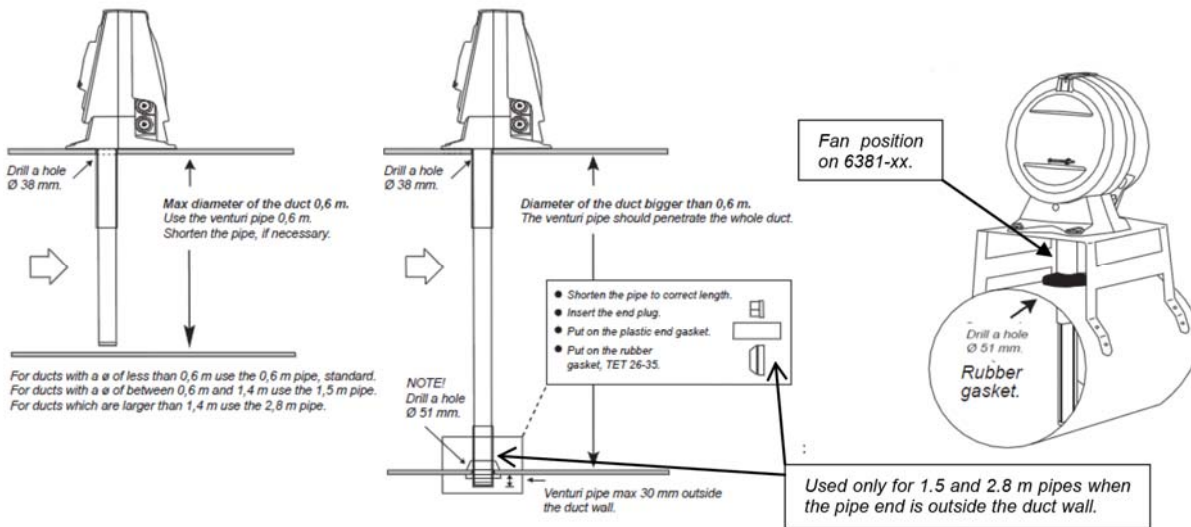
**Web:** [www.brooks.com.au](http://www.brooks.com.au) (Aus) [www.brooks.co.nz](http://www.brooks.co.nz) (NZ)

E & OE As our policy is one of continuous product development, we reserve the right to alter product details without prior notice. DS6377 10/11/14

## Product applications

The Duct detector chamber can be used in the systems FT512, FT128 and FT1020G3. It is intended for indoor use and in dry premises.

Product Code	Description
6377	UG-4 duct detector chamber – including standard mounting accessories. (NOTE! Detector & base have to be ordered separately).
6380-06	UG-4 pipe 0.6 m.
6380-15	UG-4 pipe 1.5 m – incl. plastic end gasket and rubber gasket TET 26-35.
6380-28	UG-4 pipe 2.8 m – incl. plastic end gasket and rubber gasket TET 26-35.)
6384	UG-4 filter (10 pieces)



*Left:* How to suit the pipe to different widths of the ventilation duct. 6377 can be mounted vertical on the duct and 3 x the duct diameter before or 5 x the duct diameter after a disturbance, i.e. a fan, a bend, a filter, a silencer, a damper, etc.

*Right:* The UG-4 bracket when used with round ducts.

Detailed mounting and installation instructions are attached with each Duct detector chamber.

Product Code	Description	
Duct air flow velocity (m/s)	0.5 to 20	
Ambient Temperature (°C)	Operating	-10 to +50
	Storage	-25 to +75
Ambient humidity (% RH)	max. 99, non condensing	
Ingress Protection rating	IP54	
Size H x W x D (mm)	228 x 187 x 184 (the housing only)	
Weight (g)	690 (the housing only)	
Construction / Colour	ABS / Grey (RAL7040)	
Compression glands	4 x Klikseal M20 (IP65) for cable Ø=4-11 mm	
Approvals	CE	



**Australia** Head Office: 4 Pike Street Rydalmere NSW 2116  
**Ph**+61 2 9684 1466 **Fx**+61 2 9684 4146 **Toll Free** 1300 78 FIRE

**New Zealand** Unit 106, The Zone, 23 Edwin Street Mount Eden 1024  
**Ph**+64 9 638 4644 **Fx**+64 9 6384645 **Toll Free** 0800 220 007

**Web:** www.brooks.com.au (Aus) www.brooks.co.nz (NZ)

E & OE As our policy is one of continuous product development, we reserve the right to alter product details without prior notice. DS6377 10/11/14

Sydney - Melbourne - Adelaide - Brisbane - Perth - Hobart - Darwin - New Zealand  
 fire products and solutions