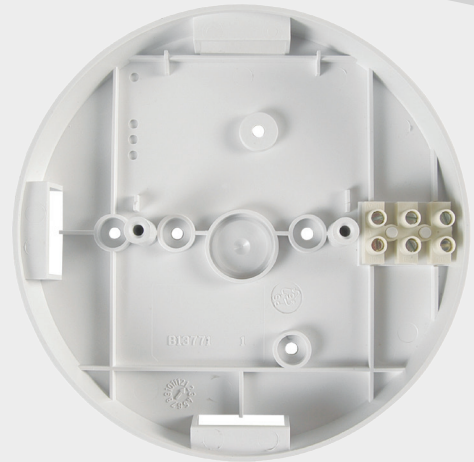


EIB127 - Surface Mount Base

For Mains Powered 230v Alarms

Key Features

- ▶ The EIB127 Base is designed to facilitate installation of bulky wiring and conduits.
- ▶ The EIB127 Base is designed to be used in conjunction with the Brooks EIB3000, EIB140RC and EIB160e Series alarms.
- ▶ The EIB127 Base is designed so that any of the Brooks EIB3000, EIB140RC and EIB160e Series alarms will fit on top of the EIB127.
- ▶ The EIB127 Base must only be used with one of the Brooks EIB3000, EIB140RC and EIB160e Series alarms otherwise the unit will not comply with the mandatory safety regulations.



Product Description

For use with EIB3000, EIB140RC and EIB160e Series alarms and facilitates bulky wiring and conduits.

Operation

Mount the unit in accordance with the siting instructions in the alarm instruction leaflet.

After connecting all of the relevant wiring, simply screw the alarm to the top of the Base.