



## FTLEDM ADDRESSABLE MIMIC PANEL

### Description

The FTLEDM is a fully programmable COM loop remote LED mimic panel. It provides green power ON indicator, yellow fault indicator, 22 red indicators for zone alarm, buzzer and a buzzer silence switch. The panel utilises the I/O matrix board 4582 and the 2 x 12 LED mimic boards currently used in the fire brigade index panel for the NZ market. An external relay and I/O multi purpose 3361 are required to provide the buzzer silence facility.

The Mimic Panel is housed in a light grey metal housing measuring 200 x 300 x 60mm.

### Mode of Operation

In normal conditions, only the green 'POWER' LED will be lit, when a fault is generated in the system, the 'POWER' LED will distinguish (depending on programming, it can remain lit in fault conditions) and the yellow 'FAULT' LED will illuminate. The Zone alarm LED's will be activated on alarm from the respective programmed zones.

The buzzer will sound dependent on the control expression used to activate the Relay Re0 of the 3361 (normally one of the associated zones going into alarm). If the Buzzer Silence switch is pressed the Buzzer will silence and the Buzzer Silence LED will illuminate. The switch will not reset until the conditions of Re0 triggering are cleared.

Note that the trigger condition of each output (LED) is dependent on the zone programming in the Site Specific Data (SSD).

For more details and addressing of the 3361 and the 4582, please refer to their individual datasheets.

### Features

Only COM loop and 24Vdc are required for the remote LED mimic panel. White rectangular space is provided on the decal label for each individual zone for labelling. Buzzer can be programmed via Re0 in 3361 to sound on zone alarm, general fault in the system or both.

			Title	Technical Datasheet		 fire • evacuation • warning systems	
			FTLEDM – Remote Addressable LED Mimic Panel for FT1020G3 & FT128	Created	Checked	TDS No.	Rev
13/8/2015	0	Original Issue	Page 1 of 2	Greg P	Anis S.	TDS048	0
Date	Rev	Description					

# Specifications

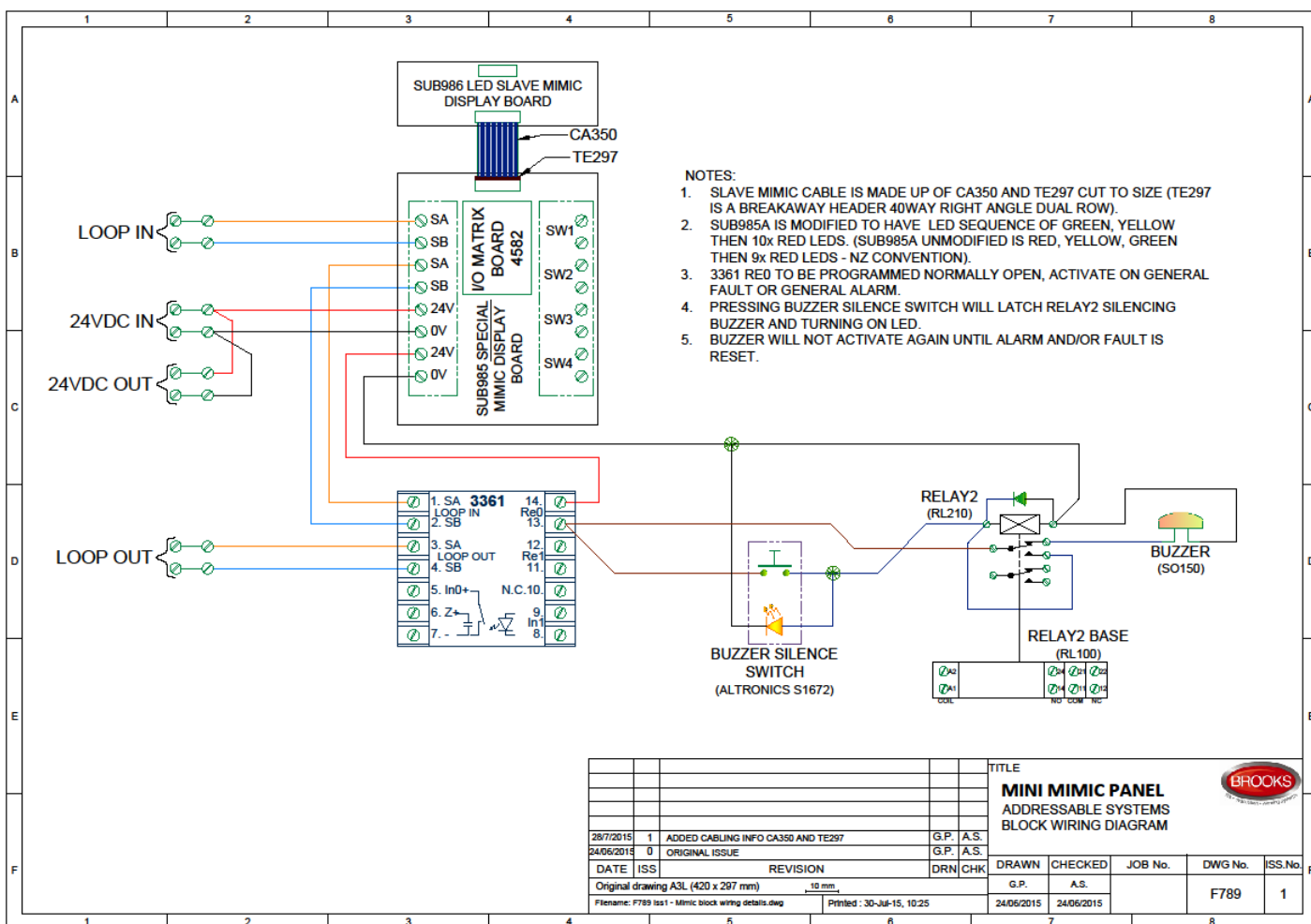
Function	Description
Current Consumption 24V	Quiescent 4mA, alarm 100mA Max
Current Consumption COM Loop	Quiescent 8.8mA, active 8.8mA

(Due to the continual development Brooks Australia reserves the rights to change the product specifications)

# Installation

2x key-lock style mounting holes 260mm apart and 1x fixed mounting hole Ø5mm. 2x 20mm knockouts provided on rear for running of cables.

# Block Wiring Diagram



			Title		Technical Datasheet		BROOKS	
			FTLEDM – Remote Addressable LED Mimic Panel for FT1020G3 & FT128		Created	Checked	TDS No.	Rev
13/8/2015	0	Original Issue			Greg P	Anis S.	TDS048	0
Date	Rev	Description	Page 2 of 2		13/8/2015	13/8/2015		