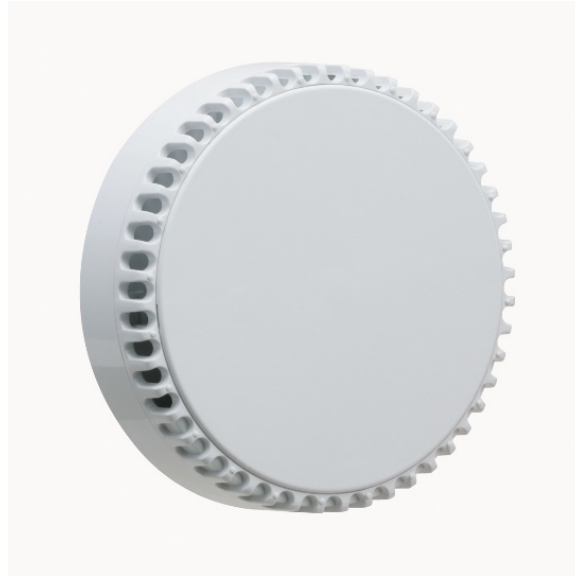


SQSWT - Squashni Sounder



The Squashni presents the many qualities of the Roshni in the form of a base sounder for use with almost any available fire detector. The flat deck area can also be used with beacons to provide a compact audio-visual alarm device with the added economy of a single installation point.

Features

- Fixing platform for detectors or beacons
- Low current consumption
- Blank cover for use as a standalone sounder
- Reduced installation costs
- Colour matched to leading manufacturers detectors
- Tamper proof cap

Technical Specification

Voltage	9 – 28VDC
Current	35mA max
Sound output	93dB(A) (tone 3)
Tones	32 with T3 option
Volume control	20dB
Monitoring	Reverse polarity
Temperature	-10°C to +55°C
Protection	IP21
Construction	ABS
Weight	0.15kg
Colour	White