

BROOKS

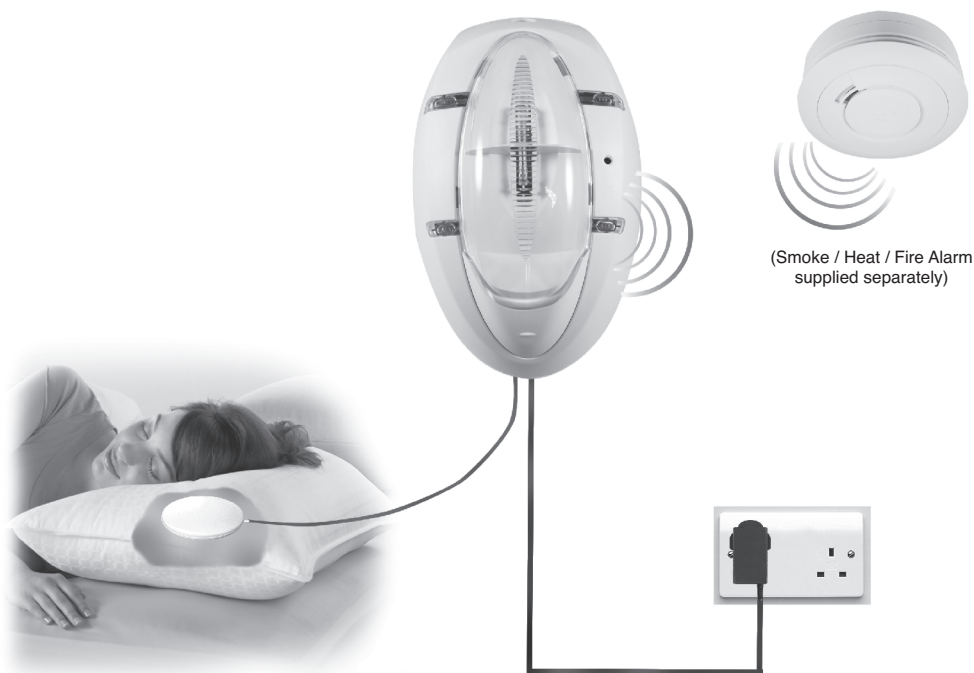
Model: EIB170RFAU

Fire Products & Solutions

Deaf & Hearing Impaired RadioLINK Alarm System

Strobe Light & Vibration Pad Module

For use with RadioLINK Smoke/Heat/Fire Alarms



Note: At least one RadioLINK Smoke/Fire/Heat Alarm is required to make the EIB170RFAU Alarm operational. This is not supplied with the EIB170RFAU and must be obtained separately.

Important: Read these instructions, together with those from the separate RadioLINK Smoke/Heat/CO Alarms and accessories before installation. All instruction leaflets must be left with the end user after installation.

The EIB170RFAU is for use with the following Ei RadioLINK Smoke/Heat/CO Alarms and accessories.

Mains Smoke & Heat Alarms:

- EIB140RC Series Alarms in conjunction with an EIB168RC RadioLINK Base.
- EIB160e Series Alarms fitted with wireless module EIB100MRF.
- EIB3000 Series Alarms fitted with EIB3000MRF.

Battery Powered Smoke Alarms:

- EIB605 Series Alarms fitted with wireless module EIB605MTYRF or EIB605MRF
- EIB650i Series Alarms fitted with EIB600MRF

Accessories:

EIB407RF Manual Call Point, **EIB428RF** Relay Module, **EIB170RFAU** Strobe Panel & **EIB420RF** Repeater Module.

1. INTRODUCTION

This leaflet describes the installation of the EIB170RFAU and its integration into a total RadioLINK Fire Alarm System, incorporating a choice of Smoke/Heat/CO Alarms and accessories.

N.B. It is essential that the EIB170RFAU is connected to the mains to preserve its one-week battery standby. Leaving the unit operating without mains connected will completely deplete the battery and possibly damage it. (If the EIB170RFAU is not being used for a prolonged period and cannot be left plugged in to the mains, then disconnect the battery).

Location

The Strobe Module should normally be fixed such that the internal strobe light can be seen from the bed, and the vibration pad can be placed under the mattress or pillow. It has to be powered from the mains (100-240VAC/50-60Hz) so a suitable socket must be available to which it can be permanently connected. The back-up battery in the Strobe Module must not be exposed to excessive heat such as sunshine, heaters, fires or the like. The associated RadioLINK Alarms and Accessories must be located and installed as described in their own instruction leaflets.

2. INSTALLATION

Strobe Module EIB170RFAU

The battery must first be installed in the Strobe Module. Open the rear compartment by squeezing together the two latches as shown in Figure 1b, and lifting the cover off.

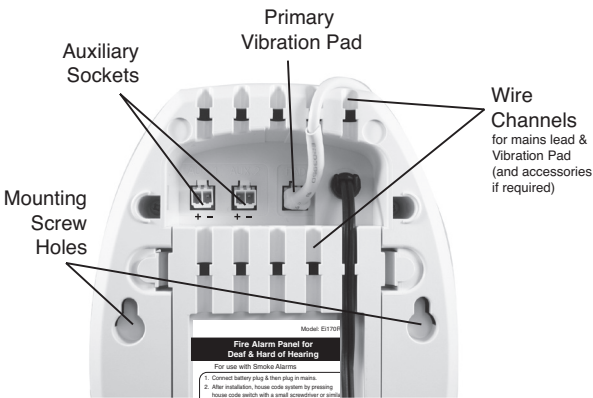


Figure 1a

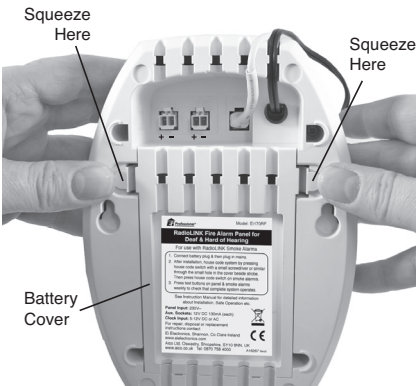


Figure 1b
Squeeze as shown to open battery compartment

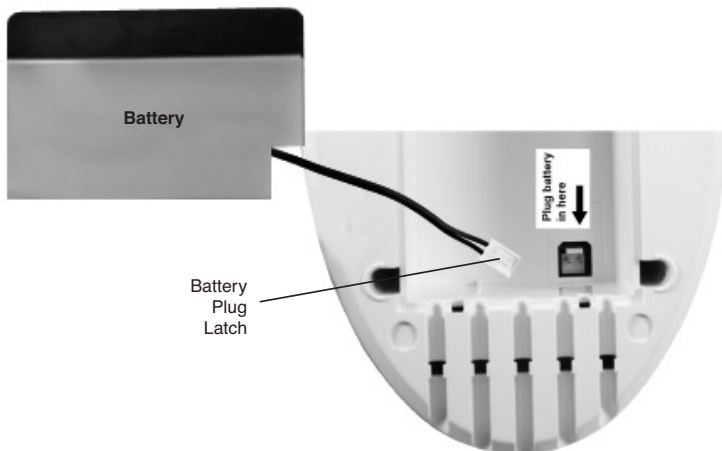


Figure 2

plug, open). Place the battery in the compartment ensuring the notch in the battery is used to leave clearance for the plug and sockets (see Figure 3).

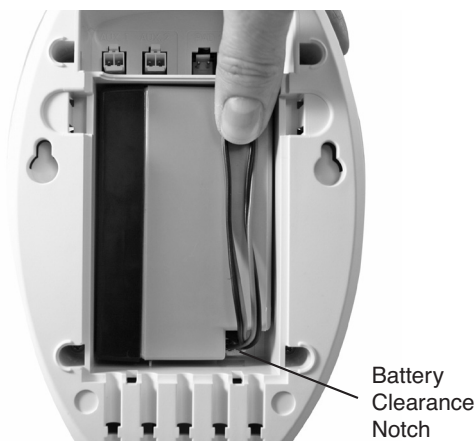


Figure 3

Shows battery orientation - Dress the battery leads as shown, replace the battery cover and push firmly down on the two latches

The Strobe Module can be left on a table or permanently fixed to the wall using the screws and plastic plugs enclosed. Use the drilling template (Figure 5) on page 9.

If fixing to a wall, the screws should be spaced 95mm (3.7 inches) horizontally apart. The top screws will be 70mm (2.7 inches) below the top surface of the Strobe Module when installed. The template at the end of this leaflet can be used to locate the screws accurately. The screws (large heads) should be screwed into the wall leaving a gap of approximately 4mm (0.15in) under the head. Fit the keyhole slots on the back of the Strobe Module over the screw heads and slide the panel down vertically into position.

The mains adaptor should then be plugged into a socket. This mains socket must not be used for any other equipment and it must not be switched off. The mains plug must be readily removable (so the mains can be disconnected if necessary). Note: The unit **must not** be wired directly to a mains junction box.

Vibration Pad EIB174

The primary vibration pad is supplied already plugged into its locking socket on the rear of the EIB170RFAU Strobe Module (see Figure 1a). Place the vibration pad under the pillow or mattress. It is important that the person in the bed can feel the vibration – check it is sufficient to wake a person by lying on the bed and pressing the test button on the Strobe Module – see also Section 4, Testing and Maintaining your System. Some mattresses may not transmit sufficient vibration, and in these cases it should be fitted under the pillow. Note: During testing, or in an actual alarm situation, the pad pulses on and off for greater effect on sleepers.

The Strobe Module must not be exposed to dripping or splashing and items filled with liquids such as vases must not be placed on or above the apparatus.

3. SETTING UP THE RadioLINK SYSTEM

This system uses radio to communicate between the Fire Alarms, Accessories and the Strobe Module. It is set-up simply by putting all of the units into “House Code Mode” and letting them automatically code with each other. This will “House Code” the installation so that they will not accidentally signal to, or be affected by, nearby systems.

The units will all communicate with each other (providing they are within range), as delivered i.e. without any House Coding - however it is recommended that they are House Coded as follows:

3.1.1 Install & power all the elements of the system.

3.1.2 Press the House Code switch on all units – see individual instruction leaflets for switch locations. On the Strobe Module, the House Code switch is pressed by means of small screwdriver (or similar, diameter of top less than 3mm), through the access hole on the top of the unit – see figure 4.

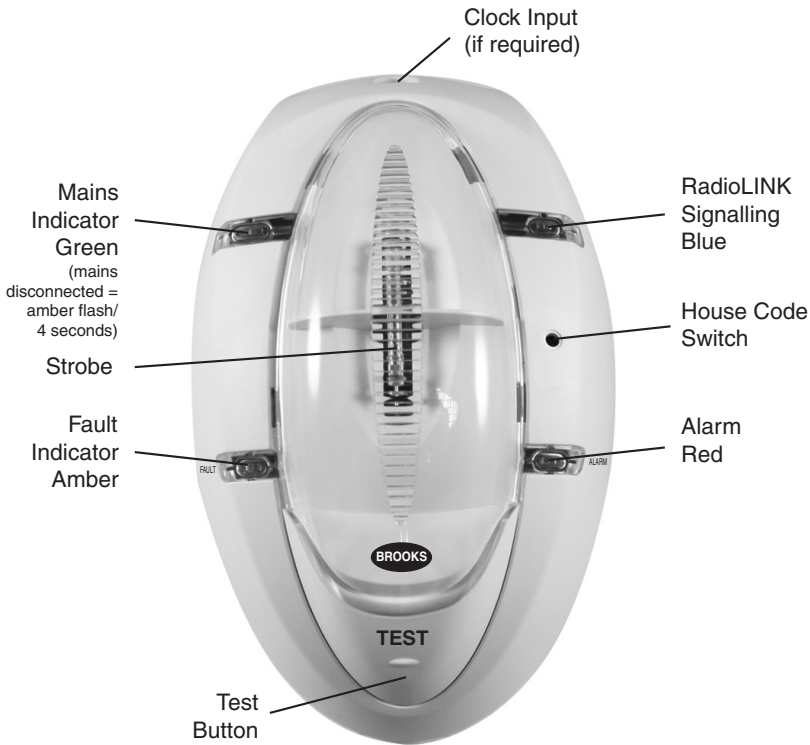


Figure 4

3.1.3 Press and hold the Strobe Module House Code button until the blue RadioLINK light comes on. Release it and the light will flash every five seconds.

3.1.4 When all units are set into 'House Code Mode' they should signal to each other and set-up their network automatically.

3.1.5 Each unit will now flash its blue or amber light to show how many units it is RadioLINKED with. If the Strobe Module is linked to just one smoke alarm they will both flash twice. With 6 units for example, 4 Smoke Alarms, a Remote Control and the Strobe Module itself, each unit will flash six times (apart from the Remote Control, which does not have this feature). A maximum of twelve RF units can be linked this way.

3.1.6 If some units flash less than the expected number of times, after being in House Code Mode for over 10 minutes) (say four times on a six unit system) they are out of range of each other.

Follow the advice in the RadioLINK instructions supplied with the other alarms to resolve this.

3.1.7 The units will automatically exit the House Code Mode after 30 minutes. However we recommend that you manually exit the House Code Mode by pressing and holding the House Code switch on the Strobe Module until the blue light turns on, then release. The blue light should stop flashing and an 'exit House Code Mode' radio signal will be sent to all other units. Check that the amber/blue lights on all other units have stopped flashing. (if some units are still flashing it may indicate a problem with the radio communication to this unit, or that the particular RadioLINK unit (model EIB407RF) does not have this automatic cancel House Code Mode feature and must be taken out of House Code Mode manually. Check instruction leaflet supplied with the units. Manually exiting the House Code Mode reduces the risk of accidentally House Coding your RadioLINK Bases with nearby systems.

Note: When the blue or amber light has stopped flashing on a unit it is out of House Code Mode – do not press the House Code switch again as this will put it back into House Code Mode.

3.2 ADDING UNITS

To add units to the system simply repeat the above procedure, i.e. put all into House Code Mode, new as well as old units, and ensure that the number of flashes shown equals the number of units in the system. For the other RadioLINK components see their instruction leaflets.

3.3 RESETTING HOUSE CODES

Sometimes it is necessary to cancel the House Code learned i.e. to reset the units to the factory settings. To reset the Strobe Module to clear the House Codes, simply hold the House Code button until the blue light illuminates solidly, then starts to flash and then stops flashing, then release the button, this will take about six seconds. For other RadioLINK components see their separate instruction leaflets.

4. TESTING AND MAINTAINING YOUR SYSTEM

4.1 AFTER INSTALLATION

4.1.1 Check that all RadioLINK Alarms and Accessories are powered correctly.

4.1.2 Check that the green light on the EIB170RFAU Strobe Module is continuously lit.

4.1.3 Press the test button on all RadioLINKED Smoke/Heat/CO Alarms, Remote Controls and Manual Call Points in turn, and check that all other Smoke/Heat/CO Alarms in the system alarm after about 4 seconds and that the strobe and vibration pad activate. Also check that the RadioLINK accessories were operated.

N.B. Wait 12 seconds before testing the next unit or if you wish to repeat testing.

4.1.4 Press the Strobe Module test button. Check the vibration pad pulses, the strobe flashes and the red alarm light on the Strobe Module flashes (this will also cause the Smoke/Heat/CO Alarms to sound and also their red lights to flash rapidly).

4.2 DAILY & WEEKLY TESTING

Check daily that the vibration pad is in its correct position under the pillow or mattress by pressing the test button on the Strobe Module. Also check daily that the green light on the Strobe Module is on constantly. We recommend that you test your system weekly by pressing all the smoke/heat/fire alarm test buttons and checking that the vibration pad and strobe light operate.

Check the Strobe Module indicator lights as follows (see figure 4)

4.2.1 Green mains power should be constantly on. If it is off check that it is plugged into the mains, that the socket is not switched off, fuses, circuit breakers etc. If the mains is off, the green light will be off and the unit will be running on the rechargeable battery. The green light will be replaced by an amber flash every 4 seconds to indicate battery is satisfactory. When this amber flash stops, the battery is depleted and the mains should be reinstated (If the mains cannot be reinstated at this time, the depleted battery should be removed, until the mains can be re-connected).

4.2.2 Press the Test button on the Strobe Module and check that the strobe flashes, the red alarm light flashes and that the blue RadioLINK light illuminates on for about 3 seconds indicating the radio test signal is being sent to the Smoke/Heat/CO Alarms and any accessories.

4.2.3 Check that the amber fault light is not flashing every 4 seconds. If it is check that the primary vibration pad is connected firmly to the socket with its plug latched (see figure 1). If the primary vibration connection is satisfactory, it is probably indicating that the battery is depleted. Connect the unit to the mains and check after 24 hours that the amber fault light has ceased flashing.

4.3 PERIODIC TESTING OF RECHARGEABLE BATTERY

4.3.1 The rechargeable battery can take up to 20 hours to charge when the unit is first powered up. It is then maintained in a fully charged state by continuous trickle charge. In the event of a mains failure the battery will power the system in standby for a week and then be capable of at least 4 minutes of alarm. If the mains fails, the green light is extinguished and the amber light flashes every 4 seconds on the Strobe Module to indicate it is on battery power. The amber light will also flash every 4 seconds if the battery is almost depleted. Both the amber lights will go off to indicate the battery is depleted and the unit is totally unpowered. The battery will last 5 years in normal use provided it is not exposed to extremes of temperature for prolonged periods, or fully discharged & charged a large number of times.

We recommend that the functioning of the rechargeable battery is checked at least yearly as follows:-

4.3.2 Ensure the Strobe Module has been mains powered for at least the previous 20 hours for the battery to charge.

4.3.3 Turn off the mains power to the unit by unplugging it or switching off the circuit at the distribution board. Check that the green light goes off and the amber light starts to flash.

4.3.4 Press the Strobe Module test button for 20 seconds and check the strobe flashes brightly, the pad vibrates strongly and that all the RadioLINK alarms trigger. Check that the red alarm light flashes while the test button is pressed. (Cover the strobe light with a card to stop this dazzling you while looking at the red light). If the red light goes off, or if the strobe is weak, or if the vibration pad is weak,

the battery will need to be replaced. Contact the nearest address in this leaflet for advice about getting a replacement. The battery also needs to be replaced if it is over 5 years old (see “replace battery by” date on side panel). To remove the battery reverse the instructions in the first part of section 2. Contact nearest address at the end of this leaflet on obtaining a replacement battery.

Replace the entire Strobe Module after 10 years operation. (see “replace unit by” date on side panel).

5. TROUBLESHOOTING

If the units fail any of the above tests after installation, the system has probably been incorrectly installed and/or all units are not House Coded correctly. Check carefully that all units are powered. If the power lights on any of the mains units are not on constantly, or flashing once every 45 seconds on battery powered units, check the connections to the mains and/or the connections to the batteries. (See individual unit instruction leaflets if necessary). For mains units check that the power is not off (i.e. due to a tripped circuit breaker or fuse).

The wiring to the primary vibration pad is monitored and if the vibration pad is removed or if its wiring is open circuit, the strobe and the amber fault light will flash (this may take up to approximately 45 seconds). There are no user serviceable parts in this unit (apart from the battery). If the unit (apart from the battery) is thought to be defective, it must be returned to the nearest address at the end of this leaflet for repair or replacement (see “Five Year Guarantee” section).

Some troubleshooting items (including RF links) are specific to individual units and may not be covered in this leaflet. In these cases the more comprehensive unit leaflet should be consulted.

6. OTHER FEATURES & ACCESSORIES

OTHER FEATURES

Strobe & Vibration Pad Module - Auxiliary Outputs - AUX 1 & AUX 2: The two auxiliary outputs are activated when the Strobe Module is in alarm. The Aux 1 & 2 socket can supply up to 180mA at 12 Volts.

N.B. The AUX 2 socket can be used for low power devices such as pager trigger inputs.

Note: As supplied the two auxiliary sockets AUX. 1 and AUX. 2 are protected by latched plastic plugs which must be removed before the auxiliary devices can be plugged in (see figure 5). These plugs can be removed by pressing the latch lever (on the side nearest the “AUX” marking) before gently pulling the plug off.

“Clock Input” Socket: A suitable alarm clock signal (with a 5 to 24 Volts AC or DC output – electrically isolated from the mains supply) can be connected to this input socket with a 3.5mm mono jack plug. (see figure 4) When the alarm clock triggers, the vibration pad turns on continuously (i.e. it is not pulsed) to wake the person, but the internal strobe or auxiliary outputs are not activated. This lets the user know it is a wake-up call and not a fire. Therefore the user needs only one vibration pad under their pillow or mattress – rather than two, one for the Fire Alarm and one for the alarm clock.

ACCESSORIES

EIB171RFAU - Auxiliary Strobe: (draws 180mA). Supplied with 10m of cable and a suitable plug for connection to the auxiliary socket. It should be plugged into AUX 1. It can be located, for example, where it is readily seen during the day (e.g. downstairs hallway).

EIB174 - Auxiliary Vibration Pad: (draws 120mA). Supplied with 5m of cable and a suitable plug for connecting to the auxiliary socket. It should be plugged into AUX 1.

EIB450 / EIB411 – Both Remote Control Units allow you to Test, Hush or Locate suitable RadioLINK Smoke/Heat/CO Alarms.

EIB407RF - RadioLINK Manual Call Point: This allows remote triggering of RadioLINK alarms / accessories and is ideal where emergency situations are identified and which require immediate evacuation.

EIB420RF - RadioLINK Repeater Module: This module can improve the robustness and range of the RF RadioLINK signal.

EIB428RF - RadioLINK Relay Module: This module contains a set of relay contacts that switch upon receipt of an alarm signal from suitable RadioLINK Smoke/Fire/Heat Alarms.

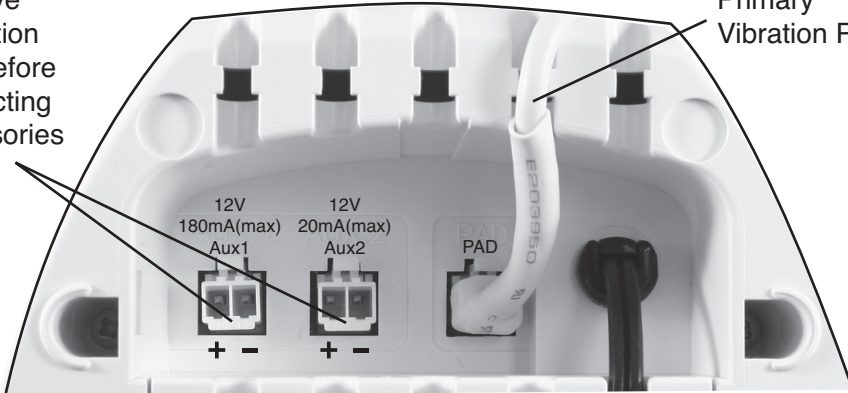
EIB171RFAU: An additional RadioLINK Strobe Module, without a vibration pad (i.e. Strobe only) is available for use in a day rooms etc. to give a visual fire warning.It is supplied with a blanking plug, without a cable attached, which connects into the primary vibration pad socket (marked "PAD") to prevent the amber fault light and strobe activating, indicating a fault (which would occur if the socket was left empty).

5. FIVE YEAR GUARANTEE

Brooks guarantees this device for five years from the date of purchase against any defects that are due to faulty materials or workmanship. This guarantee only applies to normal conditions of use and service, and does not include damage resulting from accident, neglect, misuse, unauthorised dismantling, or contamination howsoever caused. This guarantee excludes incidental and consequential damage. If this device should become defective within the guarantee period, it must be returned to the nearest address given below, carefully packaged, with the problem clearly stated along with proof of the date of purchase. We shall at our discretion repair or replace the faulty unit.

Remove protection plug before connecting accessories

Primary Vibration Pad



Template for Mounting Screws

Drill Holes Here



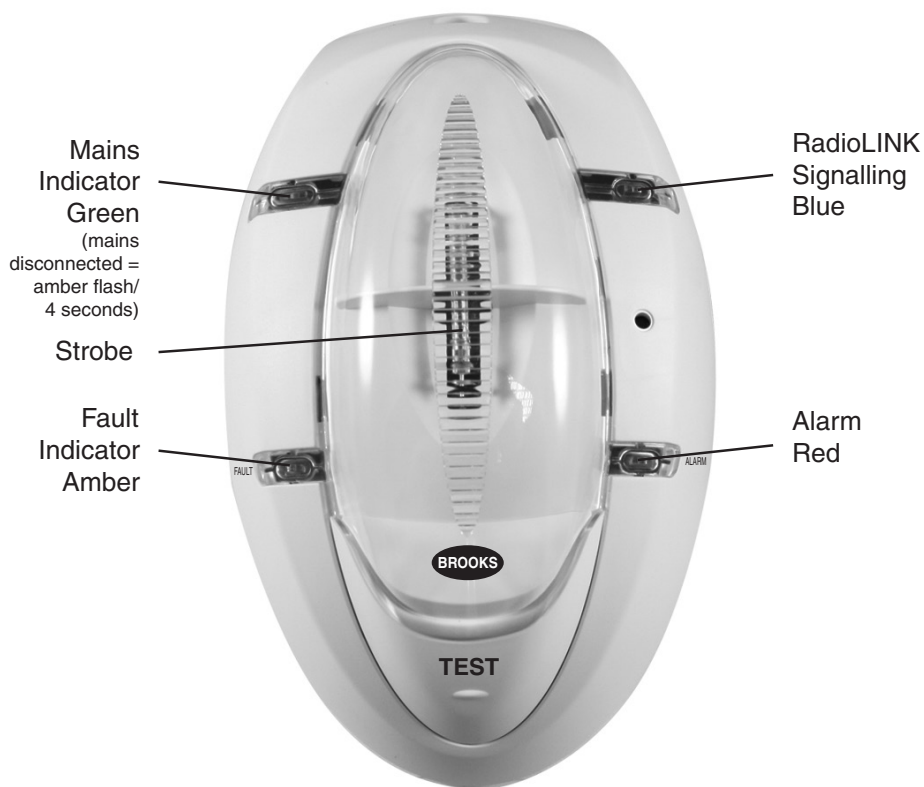
Figure 5

INDICATOR SUMMARY

Mode	MAINS / STANDBY Green Light	Amber Light	ALARM Red Light	FAULT Amber Light	STROBE Light	VIBRATION Pad	Aux1 Aux2	RADIOLINK Blue Light
Standby -								
Mains on	on	off	---	---	---	---	---	---
Mains off, battery connected	off	1 flash / 5 sec	---	---	---	---	---	---
Mains off, battery virtually depleted	off	1 flash / 5 sec	---	1 flash / 5 sec	---	---	---	---
Mains off, battery fully depleted	off	off	off	off	off	off	off	off
Sensing Fire -								
Fire signal received from smoke Alarm	---	---	1 flash / 2 sec	---	40 flashes / min	2 sec on/off pulse	on	---
Test Mode -								
Test button pressed on deaf alarm	---	---	1 flash / 2 sec	---	40 flashes / min	2 sec on/off pulse	on	on for 4 sec
Test button pressed on smoke alarm	---	---	1 flash / 2 sec	---	40 flashes / min	2 sec on/off pulse	on	---
Fault Mode -								
Vibration Pad disconnected	---	---	---	1 flash / 5 sec	40 flashes / min	---	on	---
Battery disconnected (mains on)	on	off	---	1 flash / 5 sec	---	---	---	---
House Code Mode for RF -								
Press button - enter house code	---	---	---	---	---	---	---	flashes
In house code mode	---	---	---	---	---	---	---	flashes
Press button - cancel house code	---	---	---	---	---	---	---	on for 4 sec
Alarm clock Input -								
Alarm input on	---	---	---	---	off	on continuous	off	---

INDICATOR SUMMARY

Control Panel Indicators



NSW - Head Office
4 Pike Street Rydalmere NSW 2116
Ph: 02 9684 1466
Fax: 02 9684 4146
Website: www.brooks.com.au

VIC
1/3 Molan Street, Ringwood, VIC 3134
Ph: 03 9879 5294
Fax: 03 9879 5249

SA
729A Port Road, Woodville, SA 5011
Ph: 08 8347 0000
Fax: 08 8347 0600

QLD
2/49 Boyland Ave Coopers Plains, QLD 4108
Ph: 07 3373 8222
Fax: 07 3373 8022

WA
6/91 Leach Highway, Kewdale, WA
Ph: 08 6262 8095
Fax: 02 9684 4146

New Zealand
Unit 106 "The Zone" 23 Edwin St, Mt Eden, Auckland 1024
Ph: +64 9 638 4644, Toll Free 0800 220 007 (NZ only)
Fax: +64 9 638 4645

Or National Australian Sales Number: 1300 78 FIRE (3473)
For the cost of local call.

